

EDGE CARD CONNECTOR

.100" X .200" CENTERLINE



SPECIFICATIONS

Material:

Insulator: PBT, glass reinforced thermoplastic, rated UL 94V-0
Contacts: Phosphor Bronze

Plating:

5 µin gold on contact area and 100 µin tin-lead on solder-tails

Electrical:

Operation voltage: 250 VAC max
Current rating: 3 Amp max
Contact resistance: 20 mΩ max
Insulation resistance: 1000 MΩ min @ 1000 VDC between adjacent contacts (75°F and 50% R.H.)
Dielectric withstanding voltage: 1000 VDC min rms (sea level)

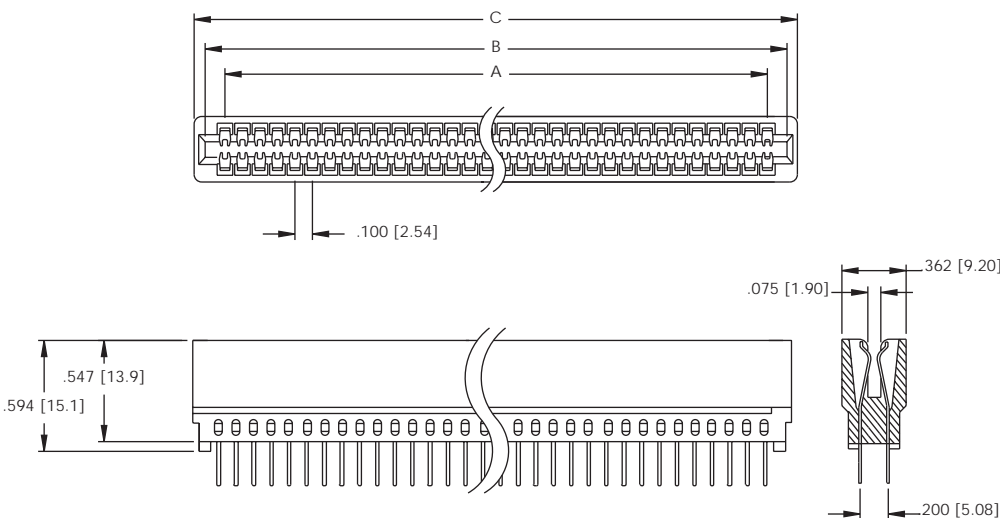


ORDERING INFORMATION

choose one from each category as shown in sample below

EC Series	36 Positions	Options (add as suffix to part number)
EC - .100" x .200" Edge Card Connector	18, 30, 32, 36, 40, 44, 50, 60, 62, 80, 98, 100	H - Hi-Temp Insulator PF - Press Fit Pins
ECR - .100" x .200" Edge Card Connector Right Angle		Right Angle Only Dimension D: 1 = 3.0 2 = 3.81 3 = 5.08

EC SERIES EDGE CARD CONNECTOR



A = .100" [2.54] x No. of Spaces
 B = .100" [2.54] x No. of Spaces + .200" [5.08]
 C = .100" [2.54] x No. of Spaces + .375" [9.53]

