

D-SUB

CONNECTOR BODY & CRIMP CONTACT

SPECIFICATIONS

Material:

Shell: Steel, tin-plated
Insulator: PBT, glass reinforced thermoplastic, rated UL 94V-0
Insulator color: Black
Contacts: Phosphor Bronze
Hardware: Brass, nickel plated

Plating:

5 µin gold on contact area over 50 µin nickel underplate, gold flash on solder-pins

Electrical:

Operation voltage: 600 VDC max
Current rating: 5 Amps max
Contact resistance: 20 mΩ max
Insulation resistance: 5000 MΩ min @ 1000 VDC between adjacent contacts (75° F and 50% R.H.)
Dielectric withstanding voltage: 1000 VAC min rms (sea level)



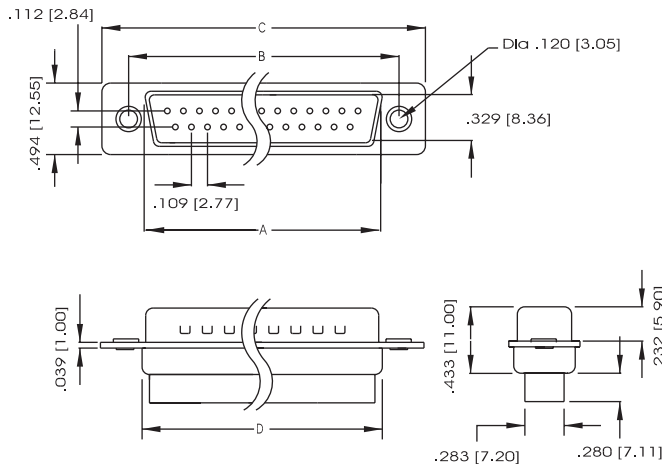
ORDERING INFORMATION

choose one from each category as shown in sample below

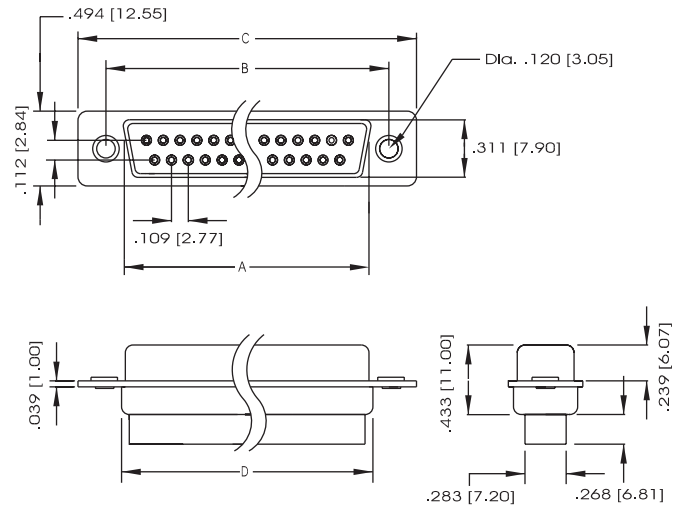
DC	25P	Options (add as suffix to part number)
Series	Positions/Gender	CN - Clinch nut RJ - Riveted Jack Screw
DC D-Sub Connector Body and Crimp Contact	Plug: 9P, 15P, 25P, 37P, 50P Socket: 9S, 15S, 25S, 37S, 50S	Crimp Contact Part No. Plug Contact: CP-1 Socket Contact: CS-1 Add Suffix - L for 1000 pcs loose in bag - R for 5000 pcs chain reel 1 = 22AWG 2 = 24AWG 3 = 30AWG



PLUG BODY



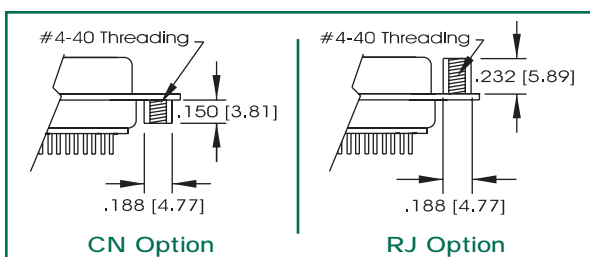
SOCKET BODY



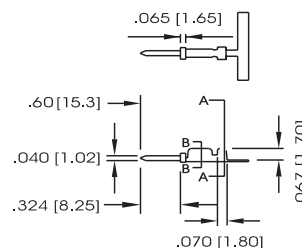
Dimensional: Socket Assembly				Dimensional: Plug Assembly			
Contacts	A	B	C	Contacts	A	B	C
9	.643 (16.33)	.984 (24.99)	1.213 (30.81)	9	.666 (16.92)	.984 (24.99)	1.213 (30.81)
15	.971 (24.66)	1.312 (33.32)	1.541 (39.14)	15	.994 (25.25)	1.312 (33.32)	1.541 (39.14)
25	1.511 (38.38)	1.852 (47.04)	2.088 (53.04)	25	1.534 (38.96)	1.852 (47.04)	2.088 (53.04)
37	2.159 (54.84)	2.500 (63.50)	2.729 (69.32)	37	2.182 (55.42)	2.500 (63.50)	2.729 (69.32)
50	2.064 (52.43)	2.406 (61.11)	2.635 (66.93)	50	2.079 (52.81)	2.406 (61.11)	2.635 (66.93)

Unit: inch/mm

Mounting Options



PLUG CONTACT



SOCKET CONTACT

