

# D-SUB

STRAIGHT PCB MOUNT - STANDARD PROFILE



## SPECIFICATIONS

### Material:

- Shell:** Steel, tin-plated
- Insulator:** PBT, glass reinforced thermoplastic, rated UL 94V-0
- Insulator color:** Black
- Contacts:** Phosphor Bronze
- Hardware:** Brass, nickel plated

### Plating:

5 µin gold on contact area over 50 µin nickel underplate, gold flash on solder-pins

### Electrical:

- Operation voltage:** 250 VAC max
- Current rating:** 3 Amps max
- Contact resistance:** 20 mΩ max
- Insulation resistance:** 3000 MΩ min @ 1000 VDC between adjacent contacts (75° F and 50% R.H.)
- Dielectric withstanding voltage:** 1000 VAC min rms (sea level)

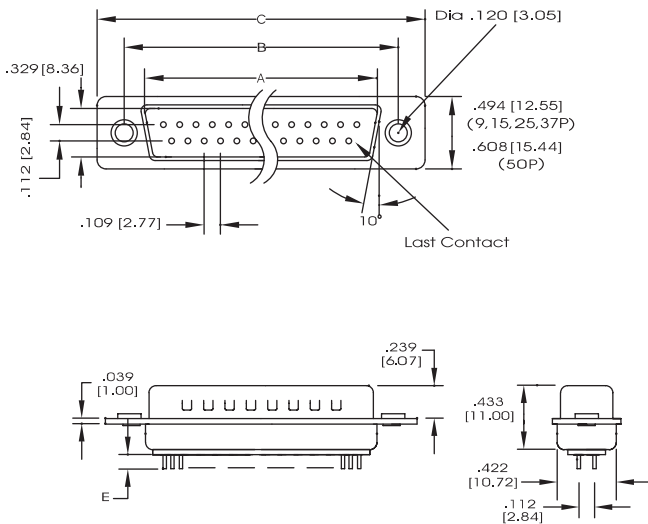


## ORDERING INFORMATION

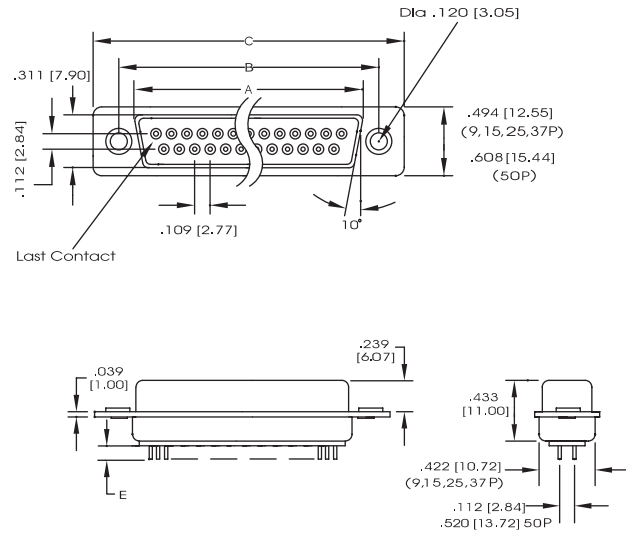
choose one from each category as shown in sample below

DB	25S	
Series	Positions/Gender	Options <i>(add as suffix to part number)</i>
DB - D-Sub Straight PCB Mount Standard height	<b>Plug:</b> 9P, 15P, 25P, 37P, 50P <b>Socket:</b> 9S, 15S, 25S, 37S, 50S	<b>CN</b> - Clinch nut <b>RJ</b> - Riveted Jack Screw <b>BS</b> - Boardsnaps <b>E</b> - Ferrite Filter Attenuation Graph Pg.51
DH - D-Sub Straight PCB Mount High Profile		

## PLUG - STANDARD PROFILE



## SOCKET - STANDARD PROFILE



## MOUNTING OPTIONS

