

D-SUB

.590" RIGHT ANGLE PCB MOUNT

SPECIFICATIONS

Material:

- Shell:** Steel, tin-plated
- Insulator:** PBT, glass reinforced thermoplastic, rated UL 94V-0
- Insulator color:** Black
- Contacts:** Phosphor Bronze
- Hardware:** Brass, nickel plated

Plating:

5 µin gold on contact area over 50 µin nickel underplate, gold flash on solder-pins

ORDERING INFORMATION

choose one from each category as shown in sample below

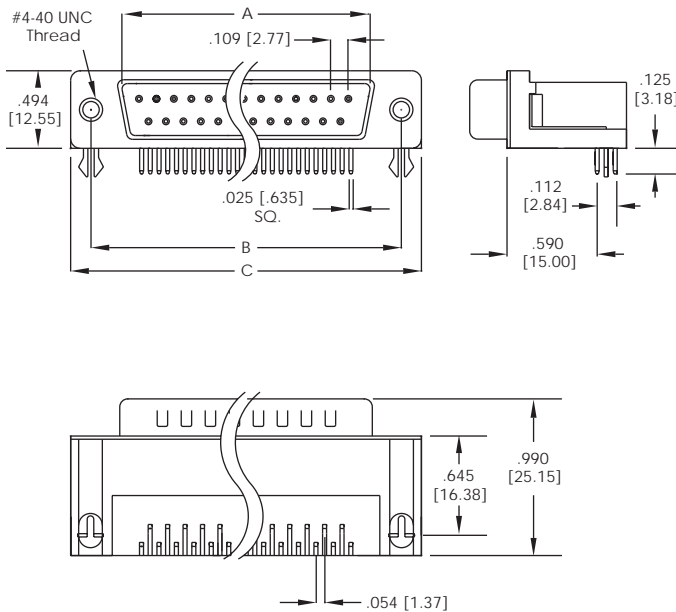
DQ		25S	Options (add as suffix to part number)
Series	Positions/ Gender		
DQ - .590" Right Angle D-Sub with Full Mounting Flange	Plug: 9P, 15P, 25P, 37P Socket: 9S, 15S, 25S, 37S		J - Jackscrews Installed
DZ - .590" Right Angle D-Sub with Half Mounting Flange			G - Groundstraps with Holes Instead of Boardlocks
			E - Ferrite Filter Attenuation Graph Pg.51

Electrical:

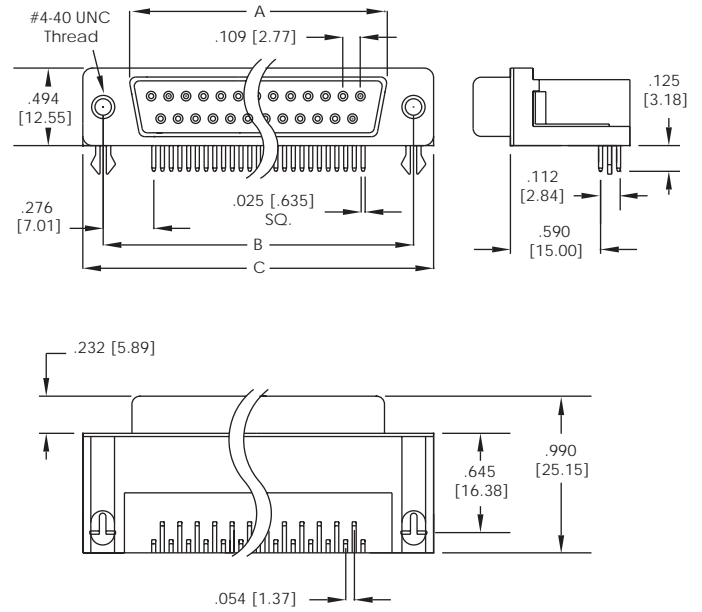
- Operation voltage:** 250 VAC max
- Current rating:** 3 Amps max
- Contact resistance:** 20 mΩ max
- Insulation resistance:** 3000 MΩ min @ 1000 VDC between adjacent contacts (75° F and 50% R.H.)
- Dielectric withstanding voltage:** 1000 VAC min rms (sea level)



DQ SERIES PLUG

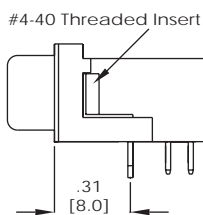


DQ SERIES SOCKET

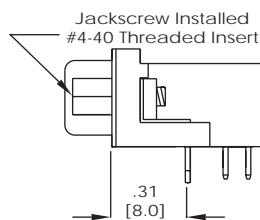


MOUNTING OPTIONS

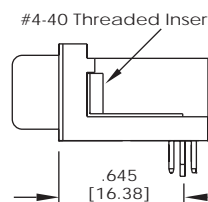
Standard DZ Series



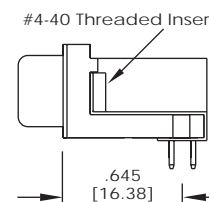
DZ Series J Option



Standard DQ Series



DQ Series with G Option



DZ Series with G Option

