

DVI CONNECTOR

DIGITAL VIDEO INTERFACE



SPECIFICATIONS

Material:

Insulator: PBT, glass reinforced thermoplastic, rated UL 94V-0
Color: Natural
Contacts: Phosphor Bronze

Plating:

5 µin gold on contact area and 100 µin tin-lead on solder-tails

Electrical:

Operation voltage: 250 VAC max
Current rating: 5 Amp max
Contact resistance: 20 mΩ max
Insulation resistance: 1000 MΩ min @ 1000 VDC between adjacent contacts (75°F and 50% R.H.)
Dielectric withstanding voltage: 1000 VDC min rms (sea level)

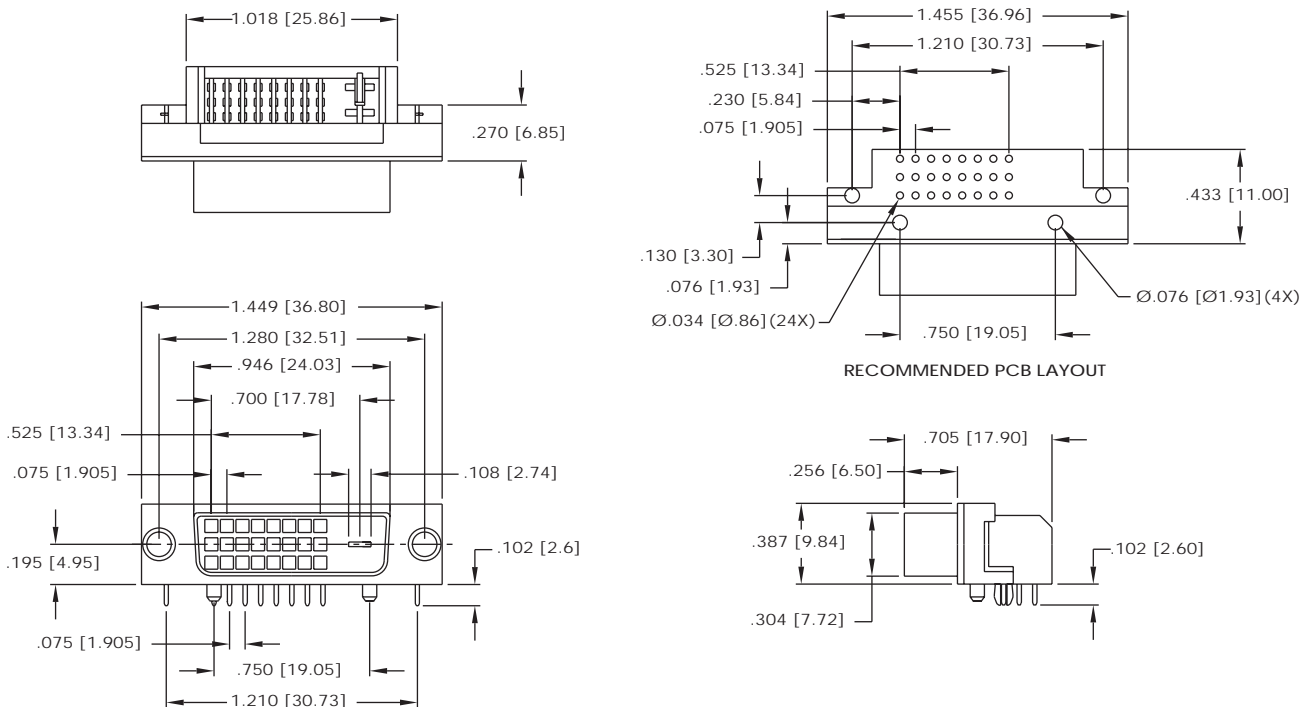


ORDERING INFORMATION

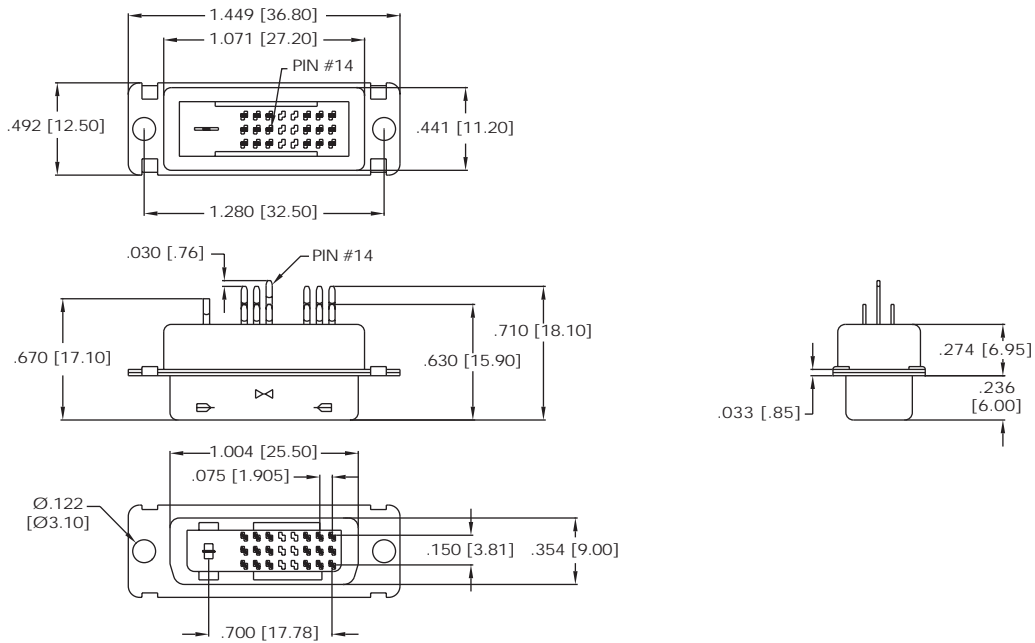
choose one from each category as shown in sample below

DVI	1P	18/1	S
Series	Interface/ Gender	Positions	Termination
DVI - Digital Video Interface	1P - Male Integrated Digital/Analog 2P - Male Digital 1F - Female Integrated Digital/Analog 2F - Female Digital	18/1 (Digital) 18/5 (Analog/Digital) 24/1 (Digital) 24/5 (Analog/Digital)	S - Solder Terminals P - PCB Mount Straight R - PCB Mount Right Angle

DVI - 2F - 24/1 - R



DVI - 2P - 24/1 - S



DVI - 1F - 24/5 - P

